



Rabbit anti p56-LCK (LSK) (Paired Y505) Polyclonal Antibody

Alternative Name(s): Lymphocyte-specific protein tyrosine kinase; LSK; p56lck

Order Information

- **Description:** p56-LCK (LSK) (Paired Y505)
- **Catalogue:** 602-350
- **Lot:** See label
- **Size:** 100ug/200ul
- **Host:** Rabbit
- **Clone:** nan
- **Application:** IHC(P), WB
- **Reactivity:** Hu, Ms, Rt

ANTIGEN PREPARATION

A synthetic peptide surrounding –GQYQP- without phosphorylation at tyrosine 505 of p56lck protein from human, rat, bovine, dog origin.

BACKGROUND

Lymphocyte specific protein tyrosine kinase (LCK) belongs to Src family protein-tyrosine kinase. It is essential for T-cell development and function. The activity p56lck is regulated by phosphorylation and dephosphorylation of two critical tyrosine residues Tyr394 and Tyr505. Tyr394 and Tyr505 are autophosphorylated after p56lck activation, whereas phosphorylation of Tyr505 is believed to be due to p50csk which negatively modulates P56lck activity. Autophosphorylation at Tyr505 of P56lck may represent an accessory mechanism for the down-regulation of the tyrosine kinase activity of P56lck.

PURIFICATION

The Rabbit IgG is purified by Epitope Affinity Purification

FORMULATION

This affinity purified antibody is supplied in sterile Phosphatebuffered saline (pH7.2) containing antibody stabilizer

SPECIFICITY

This antibody recognizes p56lck protein without phosphorylation at Tyr505. It does not recognize phosphorylated peptide. This antibody is human, rat and mouse reactive. The other species are not tested.

STORAGE

The antibodies are stable for 24 months from date of receipt when stored at –20oC to –70oC. The antibodies can be stored at 2oC-8oC for three month without detectable loss of activity. Avoid repeated freezing-thawing cycles.

APPLICATIONS/SUGGESTED WORKING DILUTIONS*

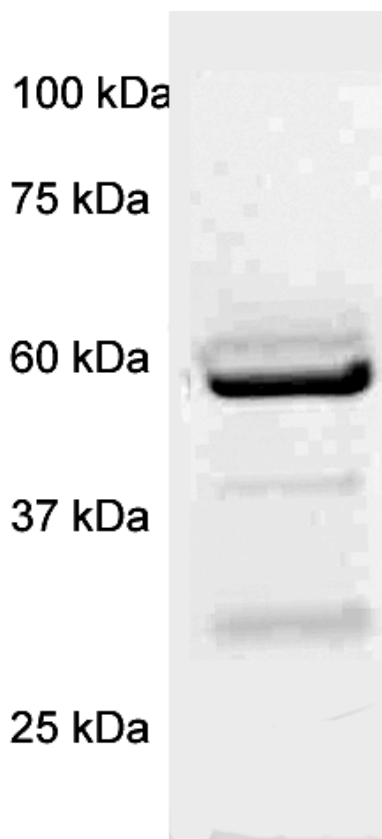
- Western Blot: 0.1-1 µg/ml
- ELISA: 0.01-0.1 µg/ml
- Immunoprecipitation: 2-5 µg/ml
- IHC: 2-10 µg/ml
- Flow cytometry: Not tested
- Molecular Weight: 56.0
- Positive Control: Kidney Tissue
- Cellular Location: Cell Membrane

*Optimal dilutions should be determined by researchers for the specific applications.

FOR RESEARCH USE ONLY.

AbboMax, Inc 2528 Qume Drive, Suite 8, San Jose, California 95131, USA
1 408-573-1898 (Tel). 1 408-573-1858 (Fax). www.abbomax.com info@abbomax.com

DATA ATTACHMENTS



Western Blot: The whole cell lysate derived from Jurkat was separated in 10% SDS-PAGE, transferred onto NC membrane, and immunoblotted by Rabbit anti-p56lck (paired Y505) (Cat#602-350) antibody at 1:500. An immunoreactive band around ~56 kDa is observed.

REFERENCES

FOR RESEARCH USE ONLY.

AbboMax, Inc 2528 Qume Drive, Suite 8, San Jose, California 95131, USA
1 408-573-1898 (Tel). 1 408-573-1858 (Fax). www.abbomax.com info@abbomax.com